

EPSYLON HV9304



DESCRIPTION

- High visibility parka combined in two colours.
- 1.- With reflective bands on the body and sleeves.
 - 2.- Hood with fluor rib and adjustable by puller.
 - 3.- Pocket on the chest with zip.
 - 4.- Two slightly inclined and easily accessible front pockets.
 - 5.- Bottom with elastic.
 - 6.- Adjustable cuffs with elastic and velcro fasteners.
 - 7.- Central placket with velcro and central fluor zip with puller.
 - 8.- Inner pocket on the chest and inner zipper for easy access for printing or embroidery.
 - 9.- Removable sleeves.

COMPOSITION

Outer: 100% waterproof polyester, 220 gsm.
Lining: 100% polyester, 65 gsm.
Wadding: 110 gsm

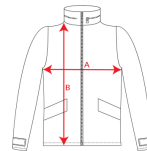
REMARKS

*CE certification according to the standards: UNE-EN ISO 13688: 2013 and UNE-EN ISO 20471: 2013.
*Class II.
*Hi-Viz.
*Water resistant.
*Windproof.

SIZES

Adults: S · M · L · XL · XXL · XXXL · XXXXL / Kids:

SCHEME



QUANTITIES

Adults

Box	Pack
10 un.	1 un.

COLORS



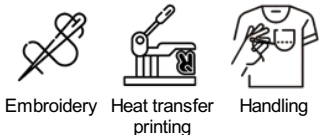
55221

SIZES

Adults	S	M	L	XL	XXL	XXXL	XXXXL
WIDTH (A)	57cm	60cm	63cm	66cm	69cm	72cm	76cm
HIGH (B)	74cm	76cm	78cm	80cm	82cm	84cm	83cm

*[Measured from the edge 1 cm below the sleeves / Measured from the highest point of the shoulder to the end of the garment]

PRINTING TECHNIQUES AVAILABLE



RELATED MODELS



SIRIO CC5063



NAOS HV9300



SOAN HV9301



POLARIS HV9302