

NEBRASKA WOMAN SS6437



DESCRIPTION

Softshell composed of 2 layers.
1.- Inverted zip to tone with chin protector and puller.
2.- Inner lining in fleece fabric.
3.- Outside pocket in right chest with zip to tone and puller.
4.- Two outside pockets with zip to tone and puller.
5.- Velcro fasteners in cuffs.
6.- Bottom hem with elastic cord and stoppers.
Fitted cut.

COMPOSITION

Two layers. Outer: 92% polyester / 8% elastane. Inner: 100% extra-warm microfleece polyester. 300 gsm.

REMARKS

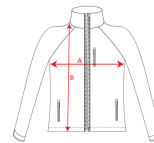
*Water resistant.
*Windproof.
*Duo concept.

SIZES

Adults: S · M · L · XL · XXL · XXXL / Kids:

SCHEME

QUANTITIES



Adults

Box 15 un. Pack 1 un.

COLORS

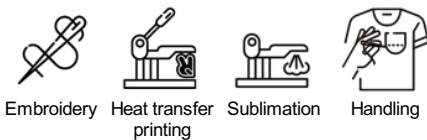


SIZES

Adults	S	M	L	XL	XXL	XXXL
WIDTH (A)	46cm	48cm	50cm	53cm	56cm	59cm
HIGH (B)	62cm	64cm	66cm	68cm	69cm	70cm

*[Measured from the edge 1 cm below the sleeves / Measured from the highest point of the shoulder to the end of the garment]

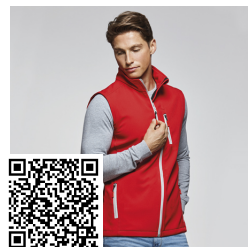
PRINTING TECHNIQUES AVAILABLE



RELATED MODELS



EUROPA WOMAN PK5078



NEVADA RA1199



NORWAY WOMAN RA5091



ANTARTIDA SS6432