

BENOIT DE9125



DESCRIPTION

Long apron.
1.- Strap with plastic closure.
2.- Lateral cords for lacings.
3.- Front pocket.

COMPOSITION

80% polyester / 20% cotton, twill of 220 gsm.

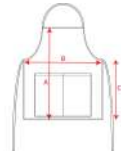
REMARKS

*Removable label.
*Special for sublimation.

SIZES

Adults: ONE SIZE / Kids:

SCHEME



QUANTITIES

Adults

Box	Pack
50 un.	1 un.



COLORS

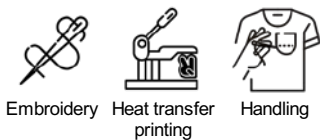


SIZES

Adults	ONE SIZE
WIDTH (A)	75cm
HIGH (B)	90cm

*[Measured from the edge 1 cm below the sleeves / Measured from the highest point of the shoulder to the end of the garment]

PRINTING TECHNIQUES AVAILABLE



RELATED MODELS



CLASSIC DE9123



MINI DE9124