

MONZHA WOMAN PO0410



DESCRIPTION

Short sleeve technical polo shirt for women. Knit collar with three-button placket. Fitted cut.

COMPOSITION

100% polyester pique, 150 gsm.

REMARKS

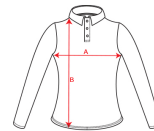
Breathable fabric, easy wash and dry.

- *Removable label.
- *Technical fabric.
- *Breathable fabric.
- *Duo concept.

SIZES

Adults: S · M · L · XL · XXL / Kids:

SCHEME



QUANTITIES

Adults

Box	Pack
50 un.	1 un.

COLORS



SIZES

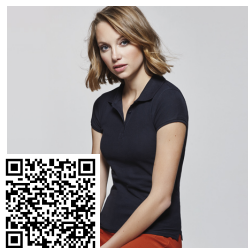
Adults	S	M	L	XL	XXL
WIDTH (A)	41cm	44cm	47cm	50cm	53cm
HIGH (B)	60cm	62,5cm	64,5cm	66,5cm	68,5cm

*[Measured from the edge 1 cm below the sleeves / Measured from the highest point of the shoulder to the end of the garment]

RELATED MODELS



MONZHA PO0404



STAR WOMAN PO6634