

SOFIA CM5061



DESCRIPTION

Slim fitted shirt with front and back darts, left front pocket and covered flap buttons. Curved hem. Easy care.

COMPOSITION

65 % polyester / 35% poplin cotton, 130 gsm.

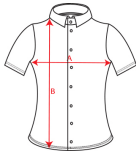
REMARKS

*Available man.

SIZES

Adults: S · M · L · XL · XXL / Kids:

SCHEME



QUANTITIES

Adults

Box	Pack
36 un.	1 un.

COLORS



SIZES

Adults	S	M	L	XL	XXL
WIDTH (A)	45cm	48cm	51,5cm	55cm	58cm
HEIGHT (B)	63,5cm	64,5cm	65,5cm	66,5cm	67,5cm

*[Measured from the edge 1 cm below the sleeves / Measured from the highest point of the shoulder to the end of the garment]

PRINTING TECHNIQUES AVAILABLE



Embroidery



Heat transfer printing



Handling printing

RELATED MODELS



OXFORD WOMAN CM5068



SOFIA L/S CM5161



OXFORD CM5507



OSLO WOMAN RA5093

The colors and measures contained in this sheet are rounded to the colors and sizes of our products. Due to continued work in product improvement and renovations of the same stock are subject to change or modification not reflected in this document. Claims based on the colors or sizes that are listed on this sheet will not be accepted. ROLY reserves the right to change without notice colors and measures regarding the products described in this data sheet.

