

DOMINICA CA6687



DESCRIPTION

Cropped and loose-fitted short-sleeve t-shirt for women. 1x1 ribbed crew neck with wide trim. Matching reinforced covered seams.

COMPOSITION

100% cotton, 170 gsm single jersey. Heather grey colour 58: 85% cotton / 15% viscose. Fluor pink lady colour 125: 65% polyester / 35% cotton.

REMARKS

*Removable label.

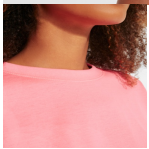
SIZES

Adults.: S · M · L · XL · 2XL / :

QUANTITIES

Box	Pack
-----	------

Adults: 100 un. 5 un.



COLORS

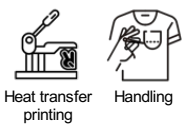


SIZES

Adults:	S	M	L	XL	2XL
WIDTH (A)	52cm	55cm	58cm	61cm	64cm
LONG (B)	52cm	54cm	56cm	58cm	60cm

*[Measured from the edge 1 cm below the sleeves / Measured from the highest point of the shoulder to the end of the garment]

PRINTING TECHNIQUES AVAILABLE



RELATED MODELS



BABY CA6564



BALI CA6597



JAMAICA CA6627



CIES CA6643

